

E R G O F I T O I N A C T I O N

Give Nature What Nature Wants

## Controlling Nematodes Naturally



ERGOFITO

[www.ergofito.co.za](http://www.ergofito.co.za)

Tel: + 27 21 447 7114 / Email: [ergofito@telkomsa.net](mailto:ergofito@telkomsa.net)

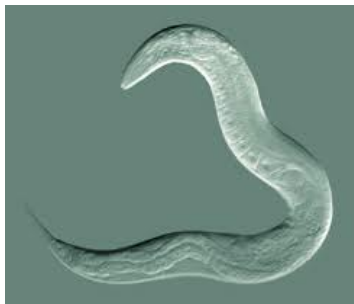
## **FIGHTING NEMATODES THE NATURAL WAY:**

In soil a loss of humus is caused where the telluric microbiological equilibrium has been compromised by the continuous use of chemical. The lack of humus causes an increase in the quantity and aggression level of the parasites (nematodes and pathogens) as well as fungi, which contributing to root based sicknesses.

Plants grown in tired soil are under continuous stress and unable to synthesis sufficient substances for self-defense. In these conditions the nematodes find an unobstructed path to multiply in great numbers and attack the roots. Pesticide intervention at this stage does not solve the problem.

## **NEMATODES BIOLOGICAL CYCLES:**

All nematodes go through an embryonic stage. The newly born nematodes have a short life in the rhizosphere (root space) of the host plants. In this phase the nematodes eat the root exudates. After this short period they can re-invade the host plants or migrate via the ground to find a new set of host roots.



## **HOW TO CONTAIN AND PREVENT NEMATODES:**

The only way to reduce the population and aggression of the nematodes is by stimulating the emissions from new roots and to change the micro-environment of the rhizosphere.

To obtain this result, it is advisable to apply **ERGOFITO NEMACONTROL**. Its action that accomplishes these objectives is due to its formulation which contains:

- Enzymes
- Mineral catalyzers
- Active carbon
- Micro-organisms
- Algae extracts
- Complex silicates, electrically charged

ERGOFITO

[www.ergofito.co.za](http://www.ergofito.co.za)

Tel: + 27 21 447 7114 / Email: [ergofito@telkomsa.net](mailto:ergofito@telkomsa.net)

The presence of these polyhedral materials gives **ERGOFITO NEMACONTROL** the required biochemical and biophysical action.

### **WHAT HAPPENS IN THE SOIL WITH ERGOFITO NEMACONTROL?**

The minerals are the catalyst for the enzymes that accelerate the biological reactions which rapidly transform the root exudates into food for the micro-organisms.

This action drastically reduces the phenomena of soil fatigue.

The microhabitat around the roots now operates as it would in a humus rich soil.

This technique eliminates nutrition for the nematode larvae reducing their life span

In a very short time the micro-organisms populate the entire rhizosphere and work in synergy with the silicates and the active carbon to detoxify the soil and create an ideal environment for new root growth.

The micro-organisms coat the entire root network with a protective biological film.

The combined action of the micro-organisms with its electrically charged molecular complex increases capillarity. This action provides for better food distribution allowing it to reach the nodules of the affected roots.

With the correct nutrition the plant is able to produce defensive substances that are a natural repellent for nematodes.

The combination of the increased capillarity, root stimulation, the control of nematodes reproduction as well as lowering their aggression level, results in a neutral cohabitation.

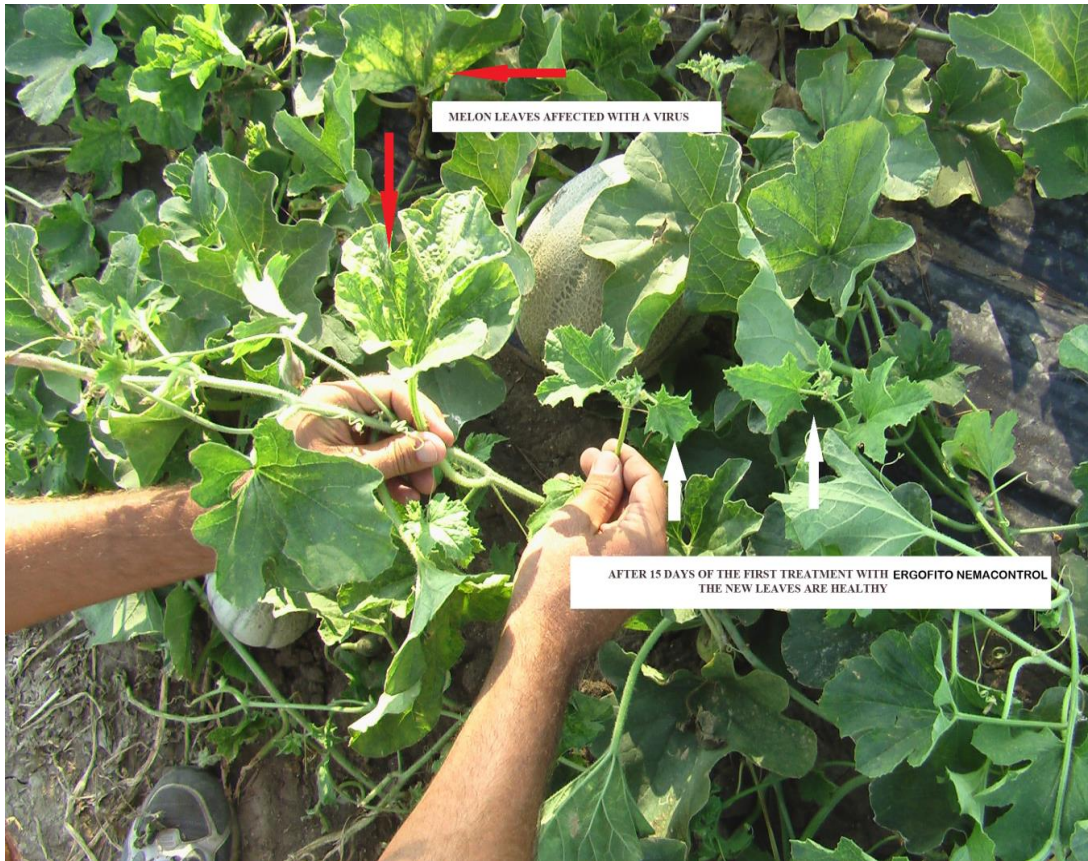
With this technique the presence of entomopathogenic beneficial nematodes are preserved. Such nematodes have a biological cycle totally different to the ones that infect the roots.

Beneficial nematodes, beside been very efficient in controlling important insects species responsible for damaging plants, are totally innocuous for the beneficial insect species. The entomopathogenic nematodes constitute an important group for biological control.

ERGOFITO

[www.ergofito.co.za](http://www.ergofito.co.za)

Tel: + 27 21 447 7114 / Email: [ergofito@telkomsa.net](mailto:ergofito@telkomsa.net)



The arrows show the areas, which were severely struck by nematodes. This picture is taken 25 days after the first application of **ERGOFITO NEMACONTROL**.

### **Application**

#### **Protocol for standard Nematode attack:**

Immediately apply the following simultaneously:

Ergofito Nematodes	6 Kg per Hectare
Ergostart Bio	10 Kg per Hectare

After 15 days apply four applications every 15 days:

Ergofito Nematodes	3 Kg per Hectare
Ergostart Bio	10 Kg per Hectare

After the above, apply every 15 days until harvest:

Ergofito Nematodes	1 Kg per Hectare
Ergostart Bio	10 Kg per Hectare

ERGOFITO

[www.ergofito.co.za](http://www.ergofito.co.za)

Tel: + 27 21 447 7114 / Email: [ergofito@telkomsa.net](mailto:ergofito@telkomsa.net)

Protocol for severe Nematode attack:

Immediately apply the following simultaneously:

Ergofito Nematodes	12 Kg per Hectare
Ergostart Bio	10 Kg per Hectare

After 15 days apply four applications every 15 days:

Ergofito Nematodes	6 Kg per Hectare
Ergostart Bio	10 Kg per Hectare

After the above, apply every 15 days until harvest:

Ergofito Nematodes	1 Kg per Hectare
Ergostart Bio	10 Kg per Hectare



ERGOFITO

[www.ergofito.co.za](http://www.ergofito.co.za)

Tel: + 27 21 447 7114 / Email: [ergofito@telkomsa.net](mailto:ergofito@telkomsa.net)